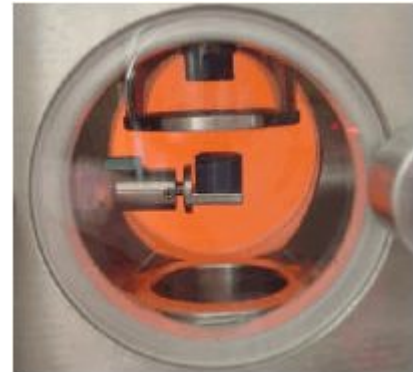


L81 – MSB MAGNETIC SUSPENSION BALANCE



To measure weight changes under extreme and environmental conditions for example corrosive atmospheres, pressure, high temperature or vacuum Linseis developed a magnetic suspension balance type L81-MSB.

For this balance the sample will be in a separate chamber made of stainless steel or quartz glass. The coupling to the thermal balance L81 will be done magnetically.

Principle of function

The thermo balance L81 will be equipped with the permanent magnet. The measuring system will also have a permanent magnet and due to this reason there is no mechanical connection between sample holder and thermal balance mechanism. The measuring system will be held in a vertical position by an electro magnet.

The measuring system which also holds the sample crucibles will be held by a permanent magnet.

Due to the magnetic coupling all weight changes of the sample will be transferred without any mechanical connection through the balance.

To compensate the drift of the balance the magnet can be adjusted and controlled in its position.

Due to this operation it is easy to do a zero adjustment for the measurement. All mechanical changes to the measuring system will be compensated electronically.

L81 – MSB MAGNETIC SUSPENSION BALANCE

