

LINSEIS DATAGRAPH II SERIES VIDEOGRAPHIC RECORDER

HIGH RESOLUTION 6.1" SCREEN WITH 18 CHANNELS AND PLUG & PLAY I/O

The Datagraph II is the newest, most advanced paperless recorder available. It is ideal for monitoring, recording, and evaluating processes in a variety of applications, including: laboratory, chemical, petrochemical, semiconductor, automotive, food & beverage, and environmental monitoring.

The Datagraph II is the first modular paperless recorder that allows for up to 18 analog inputs or a mix of analog and digital I/O cards. Other industry-leading features include: high-resolution color display (640 x 480 pixels), infrared detector for prolonged display life, plug & play I/O card, shallow unit depth, and user-friendly interface. The low-voltage and bench-top kit options also make the Datagraph II ideal for portable applications.

Multiple display formats and easy-to-access keys make monitoring and setup extremely easy. Data can be stored in flash ROM, on a compact flash card, or on a PC via RS232/422/485 or Ethernet options. The Datagraph II meets UL, CSA, and CE approval standards.

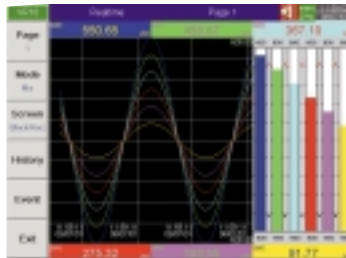


KEY FEATURES

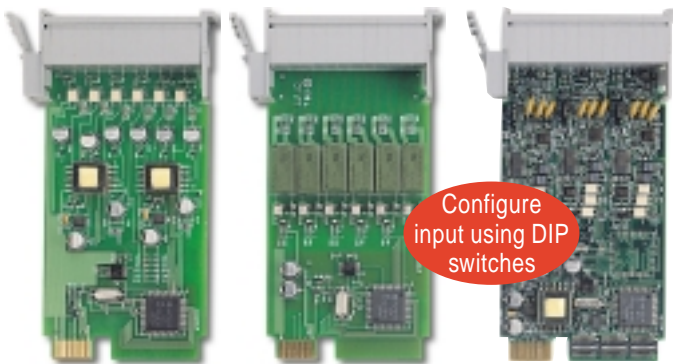
- **6.1" Color TFT LCD with 640x480 pixels resolution**
- **The Maximum Channels**
18 isolated analog input channels
- **Plug & Play Supported I/O Cards, 6 Slots**
- **High Flexibility**
User configurable I/O card; Expandable modular architecture; Flexible screen configuration
- **User-Friendly**
Soft keys coupled with interactive dialog simplify setup & operation procedures; Easy-to-access function keys
- **Infrared Detector**
Shut off LCD automatically to prolong LCD life and save power while nobody's near
- **Save Space**
Only 6.9" (174 mm) depth behind panel
- **Various Display Formats**
Vertical trend, Horizontal trend, Bar Graph, Numerical or mixed
- **Save Data in Flash ROM**
Compact Flash Card or PC
- **Communication**
Standard Ethernet and optional RS-232/422/485
- **The Highest Accuracy**
18-bit A-D analog input, 15-bit D-A analog output
- **Fast Sampling Rate**
Within 200 msec for all channels; Programmable Filter or Moving Average Sampling Method
- **Statistics with Instant, Average, Min./Max. Values**
- **Programmable Alarms and Messages available**
- **Portable/Bench-Top Assembly Kit available**



Back View



Mixed Mode



Digital Input

Digital Output
(6 alarms)

Analog Input

DATAGRAPH II, CONTINUED

DATAGRAPH II SPECIFICATIONS

POWER	90-264VAC, 47-63Hz, 60VA, 30W maximum 11-18 or 18-36 VDC 60VA, 30W maximum
DISPLAY	6.1" TFT LCD, 640X480 pixel resolution, 256 colors
MEMORY	Storage Memory on board: 8MB. CF Card: 16MB standard. Optional 64,128MB
OPERATING TEMPERATURE	5°C to 50°C
HUMIDITY	20 to 80% RH (non-condensing)
DIMENSIONS (WxHxD)	166 x 144 x 174mm for panel mount

ANALOG INPUT CARD (AI181, AI182, AI183)

RESOLUTION	18 bits
SAMPLING RATE	5 times/second
MAXIMUM RATING	-2 VDC minimum, 12 VDC maximum
TEMPERATURE EFFECT	±1.5 µV/°C for all inputs except mA input ±3.0 µV/°C for mA input
SENSOR LEAD RESISTANCE EFFECT	T/C: 0.2 µV/ohm 3-wire RTD: 2.6°C/ohm of resistance difference of two leads
BURN-OUT CURRENT	200nA
INPUT TYPED	J, K, T, E, B, R, S, N, L, PT100 (DIN), PT100 (JIS), mV, mA, 0~1V, 0~5V, 1~5V, 0~10V

DIGITAL INPUT CARD (DI181)

CHANNELS	6 per card
LOGIC LOW	-30V minimum, 0.8V maximum.
LOGIC HIGH	2V minimum, 30V maximum
EXTERNAL PULL-DOWN RESISTANCE	1KOhm maximum
EXTERNAL PULL-UP RESISTANCE	1.5MOhm minimum

DIGITAL OUTPUT CARD (DO181)

CHANNELS	6 per card
CONTACT FORM	N.O. (form A) .
RELAY RATING	5A/240 VAC, life cycles 200,000 for resistive load

COMM MODULE (CM181)

INTERFACE	RS-232 (1 unit), RS-485 or RS-422 (up to 247 units)
PROTOCOL	Modbus Protocol RTU mode
ADDRESS	1-247
BAUD RATE	0.3~38.4 Kbits/sec.
DATA BITS	7 or 8 bits
PARITY BIT	None, Even or Odd
STOP BIT	1 or 2 bits

STANDARD ETHERNET COMMUNICATION

PROTOCOL	Mod Bus TCP/IP, 10 BaseT Auto polarity correction for 10 BaseT
PORTS	AUI (Attachment Unit Interface) and RJ-45 Auto-detect capability

INFRARED DETECTOR

DISTANCE	Detect moving human body within 2 meters
-----------------	--

APPROVAL STANDARDS

SAFETY	UL873 (11th edition, 1994) CSA C22.2 No. 24-93 CE: EN61010-1 (IEC1010-1)
PROTECTIVE CLASS	IP 30 front panel, indoor use, IP 20 housing and terminals
EMC	Emission: EN50081-1, EN61326 (EN55011 class B, EN61000-3-2, EN61000-3-3) Immunity: EN50082-2, EN61326 (EN61000-4-2, EN61000-4-3, EN61000-4-4, EN61000-4-5, EN61000-4-6, EN61000-4-11, EN50204)

DATAGRAPH II ORDERING INFORMATION

POPULAR MODELS

VG18-4300-011-010	3-channel recorder, 90-264 VAC, Ethernet interface
VG18-4600-011-010	6-channel recorder, 90-264 VAC, Ethernet interface
VG18-4800-011-010	12-channel recorder, 90-264 VAC, Ethernet interface
VG18-4D00-011-010	18-channel recorder, 90-264 VAC, Ethernet interface
AI183	3-channel analog input card
DO181	6-channel relay output card
CM181	RS232/422/485 with communications software